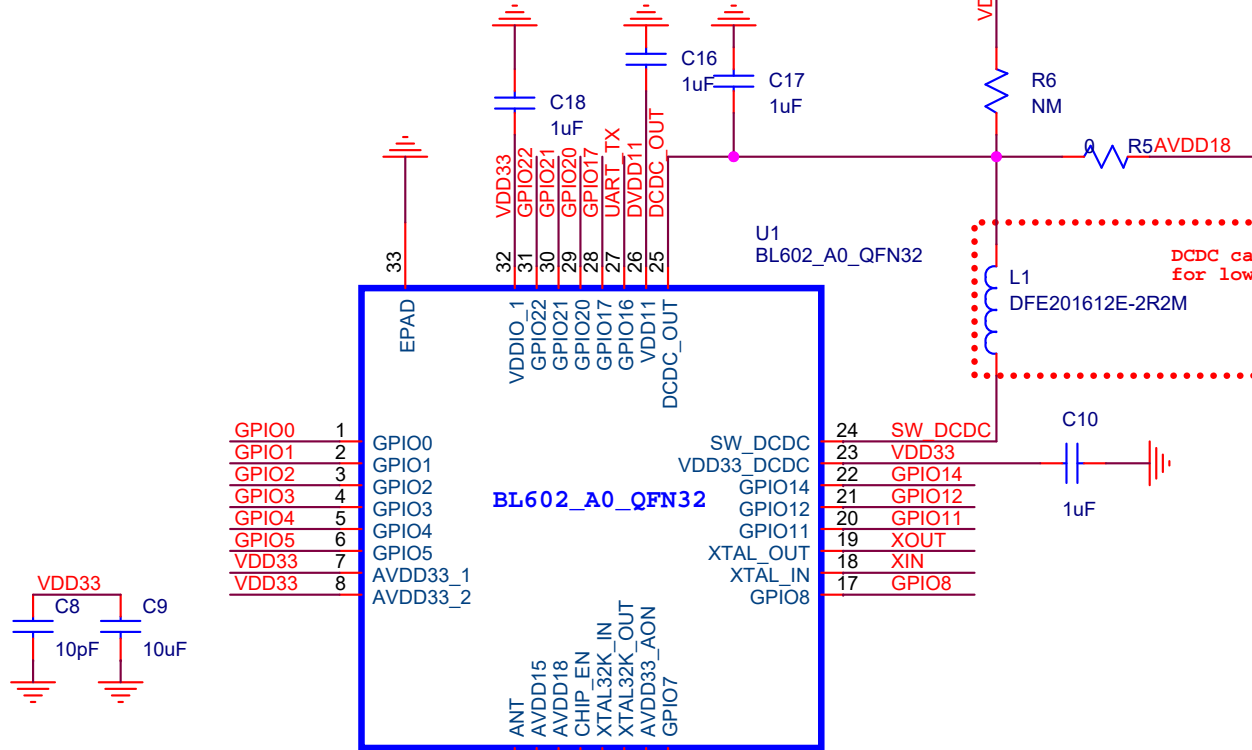
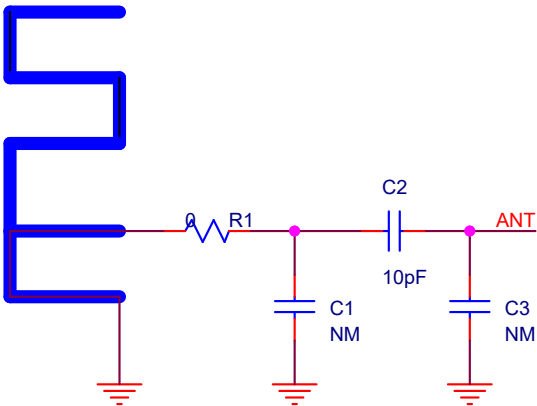


Place bypass capacity to pins as close as possible



Place C8/C9 to pin7&pin8 as close as possible

PCB ANT



Place C6/C7 to pin10 as close as possible  
Place C5 to pin11 as close as possible

Title		
BL602 Reference Design		
Size	Document Number	Rev
A	BL602	0.2
Date:	Thursday, August 13, 2020	Sheet 1 of 2

IO Number	Function 1	Function 2
GPIO0	Flash_DO	I2C_SCL/SPI_MISO/SPI_MOSI
GPIO1	Flash_WP	I2C_SDA/SPI_MOSI/SPI_MISO
GPIO2	Flash_HO	I2C_SCL/SPI_SS/PWM2
GPIO3	I2C_SDA/SPI_CLK/PWM3	
GPIO4	I2C_SCL/SPI_MISO/SPI_MOSI/Interrupt/PWM4	
GPIO5	I2C_SDA/SPI_MOSI/SPI_MISO/Interrupt	
GPIO7	UART_RX	
GPIO8	BOOTSTRAP	
GPIO11	TDO/I2C_SDA/SPI_CLK/PWM1/Interrupt	
GPIO12	TMS/I2C_SCL/SPI_MISO/SPI_MOSI/PWM2/Interrupt	
GPIO14	TCK/I2C_SCL/SPI_SS/PWM4/Interrupt	
GPIO16	UART_TX	
GPIO17	TDI/I2C_SDA/SPI_MOSI/SPI_MISO/PWM2	
GPIO20	Flash_DI	I2C_SCL/SPI_MISO/SPI_MOSI/PWM0
GPIO21	Flash_CS	I2C_SDA/SPI_MOSI/SPI_MISO/PWM1
GPIO22	Flash_CLK	I2C_SCL/SPI_SS/PWM2

Title		
BL602 Reference Design		
Size	Document Number	Rev
A	PINMUX Table	0.2
Date:	Thursday, August 13, 2020	Sheet 2 of 2